



## AVANT® Light Material Buckets

Light material buckets are designed for efficient handling of snow, sawdust, manure, wood chips, and other lightweight materials. With an extended bottom and higher sides compared to general buckets, they allow for faster and more efficient loading. The absence of internal reinforcement plates ensures smooth material flow, while slightly angled sidewalls enable easy and complete emptying.

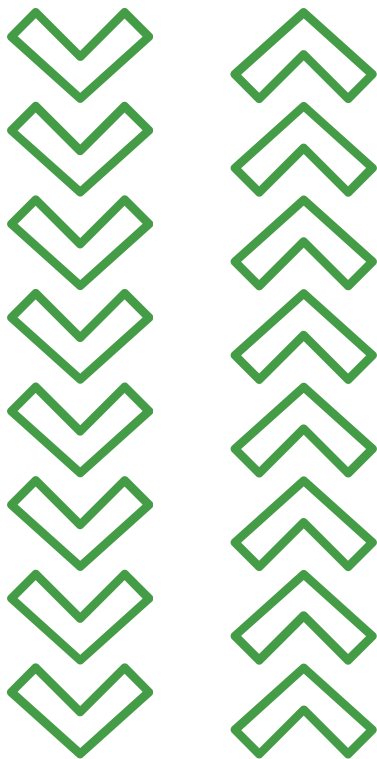
The high back design prevents material from spilling over the rear edge, maximizing capacity. The bucket also offers excellent visibility to the front edge for precise operation. Built for durability, it features a strong cutting edge made from high-tensile, abrasion-resistant steel.

### Technical Information

<u>Width</u>	<u>Volume</u>	<u>Weight</u>	<u>Product No.</u>
1150 mm	490 l	125 kg	A36715
1300 mm	560 l	135 kg	A36714

## Compatible Models

Model	Compatibility
220	✗ Not Compatible
225	✗ Not Compatible
225 LPG	✗ Not Compatible
313S	+ Adaptable
320S	✓ Compatible
420	✓ Compatible
520	✓ Compatible
525 LPG	✓ Compatible
528	✓ Compatible
630	✓ Compatible
635	✓ Compatible
640	✓ Compatible
745	✓ Compatible
750	✓ Compatible
755i	✓ Compatible
760i	✓ Compatible
e5	✓ Compatible
R20	✓ Compatible
R28	✓ Compatible
R35	✓ Compatible



# AVANT® XL Material Buckets

The XL light material bucket is a high-capacity attachment designed for Avant 600 and 700 series loaders, ideal for handling light materials such as wood chips, mulch, and snow.

Its open interior, free of reinforcement plates, ensures smooth loading and unloading, while the slightly angled sidewalls enable complete emptying, even in challenging conditions. Built for durability, this bucket offers a robust design and is best suited for larger Avant loaders.

## Technical Information

Width	Height	Volume	Weight	Product No.
1450 mm	870 mm	710 l	155 kg	A36703
1600 mm	880 mm	800 l	265 kg	A36476
1800 mm	880 mm	900 l	280 kg	A36343

## Compatible Models

Model	Compatibility
220	✗ Not Compatible
225	✗ Not Compatible
225 LPG	✗ Not Compatible
313S	✗ Not Compatible
320S	✗ Not Compatible
420	✗ Not Compatible
520	+ Adaptable
525 LPG	+ Adaptable
528	+ Adaptable
630	✓ Compatible
635	✓ Compatible
640	✓ Compatible
745	✓ Compatible
750	✓ Compatible
755i	✓ Compatible
760i	✓ Compatible
e5	✓ Compatible
R20	+ Adaptable
R28	+ Adaptable
R35	✓ Compatible



## AVANT® Heavy Duty Bucket

Avant heavy-duty general buckets start at 1300 mm in width and are built with stronger materials, offering greater capacity and durability than standard general buckets. Designed for tougher earthmoving and material handling tasks, they are best suited for Avant 600 and 700 series loaders.

These buckets maintain the key features of standard general buckets, including excellent visibility to the edge, a smooth interior for easy filling and emptying, and slightly angled sides that ensure complete material discharge. Available with either a straight edge or teeth, with an optional teeth protection plate.

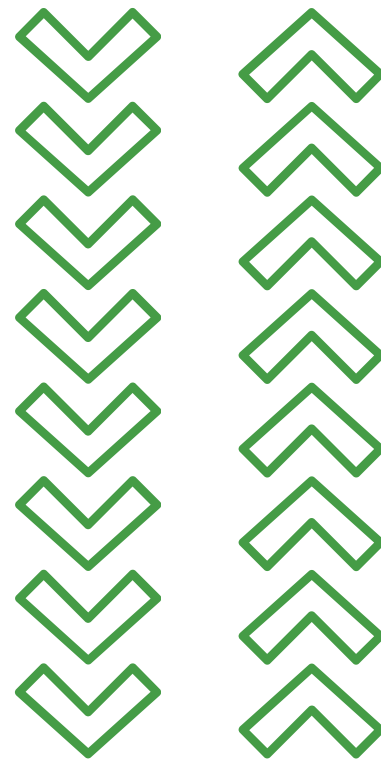
- Built for demanding earthmoving and material handling
- Superior visibility to the bucket edge
- Smooth interior for easy loading and emptying
- High breakout force
- Reinforced cutting edge made from abrasion-resistant wear steel
- Optional bucket teeth available

### Technical Information

Width	Edge	Volume	Weight	Product No.
1300 mm	Straight	370 l	126 kg	A36713
1300 mm	Teeth	370 l	139 kg	A36747
1450 mm	Straight	420 l	138 kg	A36712
1450 mm	Teeth	420 l	150 kg	A36746
1600 mm	Straight	460 l	150 kg	A36535
1600 mm	Teeth	460 l	165 kg	A36745

## Compatible Models

Model	Compatibility
220	✗ Not Compatible
225	✗ Not Compatible
225 LPG	✗ Not Compatible
313S	✗ Not Compatible
320S	✗ Not Compatible
420	✗ Not Compatible
520	✗ Not Compatible
525 LPG	✗ Not Compatible
528	● Adaptable
530	● Adaptable
630	✓ Compatible
635	✓ Compatible
640	✓ Compatible
745	✓ Compatible
750	✓ Compatible
755i	✓ Compatible
760i	✓ Compatible
e5	✗ Not Compatible
R20	✗ Not Compatible
R28	● Adaptable
R35	✓ Compatible



# General Bucket Attachment

## Technical Information

Width	Edge	Volume	Weight	Product No.
900 mm	Straight	190 l	62 kg	A36711
900 mm	Teeth	190 l	72 kg	A36716
1050 mm	Straight	150 l	50 kg	A36702*
1050 mm	Straight	240 l	73 kg	A36710
1050 mm	Teeth	240 l	83 kg	A36780
1150 mm	Straight	260 l	76 kg	A36709
1150 mm	Teeth	260 l	91 kg	A36779
1300 mm	Straight	300 l	86 kg	A36698
1300 mm	Teeth	300 l	98 kg	A36778
1350 mm	Straight	310 l	90 kg	A36996
1350 mm	Teeth	310 l	102 kg	A36997

Avant general buckets are designed for optimal visibility, allowing the operator to see the front edge from the driver's seat for fast and efficient loading and emptying. The bucket has no internal reinforcement plates, ensuring smooth material flow, while slightly angled sidewalls facilitate complete emptying of various materials.

The bucket's length is optimized for maximum breakout force, and narrow slots at the top enhance visibility while preventing stones from falling toward the operator. Available with a straight edge or teeth, with an optional teeth protection plate.

Versatile and durable, this bucket is ideal for a wide range of shoveling tasks, offering excellent visibility, high breakout force, and a strong cutting edge made from high-tensile, abrasion-resistant steel.

# Compatible Models

Model	Compatibility
220	✓ Compatible
225	✓ Compatible
225 LPG	✓ Compatible
313S	✓ Compatible
320S	✓ Compatible
420	✓ Compatible
520	✓ Compatible
525 LPG	✓ Compatible
528	✓ Compatible
630	✓ Compatible
635	✓ Compatible
640	✓ Compatible
745	✓ Compatible
750	+ Adaptable
755i	+ Adaptable
760i	✓ Compatible
e5	✓ Compatible
R20	✓ Compatible
R28	✓ Compatible
R35	✓ Compatible



## AVANT® XL High Tip Bucket

The XL high-tip bucket offers increased loading capacity, making it ideal for handling light materials such as wood chips and for use in recycling facilities.

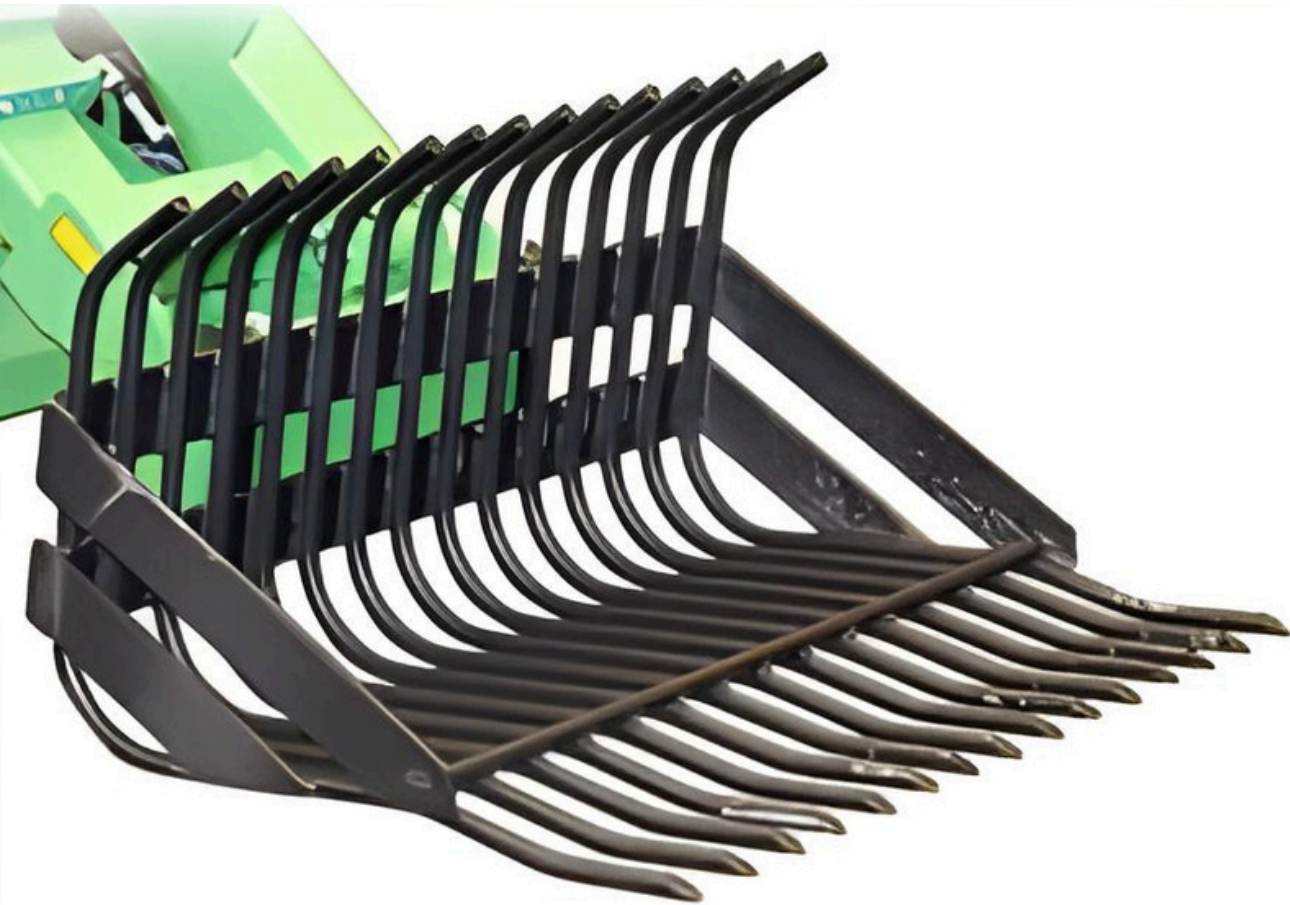
Equipped with two hydraulic cylinders, it ensures smooth and effortless emptying, even when fully loaded. With a tipping height of nearly 3.5 meters, it enables efficient loading and material handling.

### R, 600 & 700 SERIES Technical Information

<u>Width</u>	<u>Volume</u>	<u>Weight</u>	<u>Product No.</u>
1450 mm	720 l	270 kg	A36841
1800 mm	900 l	320 kg	A21273

## Compatible Models

Model	Compatibility
220	✗ Not Compatible
225	✗ Not Compatible
225 LPG	✗ Not Compatible
313S	✗ Not Compatible
320S	✗ Not Compatible
420	✗ Not Compatible
520	+ Adaptable
525 LPG	+ Adaptable
528	✓ Compatible
630	✓ Compatible
635	✓ Compatible
640	✓ Compatible
745	✓ Compatible
750	✓ Compatible
755i	✓ Compatible
760i	✓ Compatible
e5	✓ Compatible
R20	✓ Compatible
R28	✓ Compatible
R35	✓ Compatible



## Stone Collecting Bucket

### 300, 400, 500, R, 600 & 700 Series Technical Information

The stone collecting bucket, also known as a riddle bucket, is designed primarily for gathering stones from fields after harrowing.

Compatible with the 400, 500, 600, and 700 series, it enables quick and efficient stone collection from nearby fields.

<u>Width</u>	<u>Bar Diameter</u>	<u>Weight</u>	<u>Product No.</u>
1050 mm	22 mm	95 kg	A2999
1370 mm	30 mm	250 kg	A415432

## Compatible Models

Model	1050 mm Compatibility	1370 mm Compatibility
220	✗ Not Compatible	✗ Not Compatible
225	✗ Not Compatible	✗ Not Compatible
225 LPG	✗ Not Compatible	✗ Not Compatible
313S	+ Adaptable	✗ Not Compatible
320S	✓ Compatible	✗ Not Compatible
420	✓ Compatible	✗ Not Compatible
520	✓ Compatible	✓ Compatible
525 LPG	✓ Compatible	✓ Compatible
528	✓ Compatible	✓ Compatible
630	✓ Compatible	✓ Compatible
635	✓ Compatible	✓ Compatible
640	✓ Compatible	✓ Compatible
745	✓ Compatible	✓ Compatible
750	✓ Compatible	✓ Compatible
755i	✓ Compatible	✓ Compatible
760i	✓ Compatible	✓ Compatible
e5	✓ Compatible	+ Adaptable
R20	✓ Compatible	✓ Compatible
R28	✓ Compatible	✓ Compatible
R35	✓ Compatible	✓ Compatible



## AVANT® Skip Bucket

The new skip buckets are significantly larger than previous models, resembling skip containers while remaining easy to transport and empty with Avant. Optional castor wheels allow effortless movement and manual filling, making them ideal for use in horse stables, factory floors, and other tight spaces where loader access is limited. Once full, the bucket can be transported and emptied using Avant.

Designed as a practical alternative to waste bins on-site, the skip bucket offers customizable options to enhance functionality. Castor wheels are available in solid plastic or pneumatic tires, while optional supports raise the rear and lower the front by approximately 100 mm, making it easier to empty a wheelbarrow into the bucket.

### Available Options:

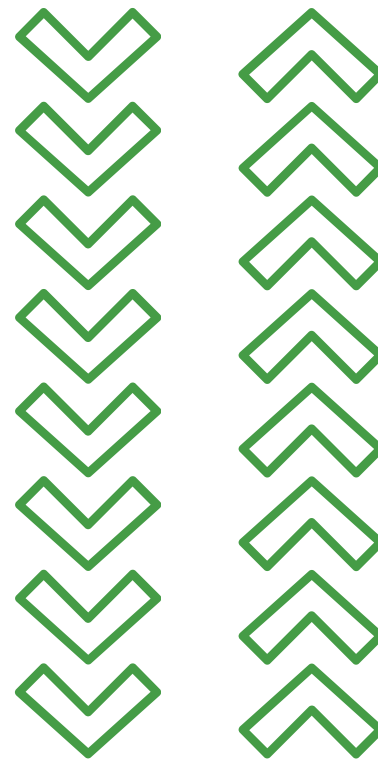
- A418506 – Castor wheels (4 pcs, increases bucket height by 165 mm)
- A420800 – Pneumatic castor wheels (4 pcs, increases bucket height by 235 mm)
- A420537 – Supports (4 pcs)

### Technical Information

<u>Width</u>	<u>Volume</u>	<u>Weight</u>	<u>Product No.</u>
880 mm	630 l	115 kg	A36588
1280 mm	950 l	145 kg	A36595

## Compatible Models

Model	Compatibility
220	✗ Not Compatible
225	✗ Not Compatible
225 LPG	✗ Not Compatible
313S	✓ Compatible
320S	✓ Compatible
420	✓ Compatible
520	✓ Compatible
525 LPG	✓ Compatible
528	✓ Compatible
630	✓ Compatible
635	✓ Compatible
640	✓ Compatible
745	✓ Compatible
750	✓ Compatible
755i	✓ Compatible
760i	✓ Compatible
e5	✓ Compatible
R20	✓ Compatible
R28	✓ Compatible
R35	✓ Compatible



# AVANT® Sand Salt Spreader

The hydraulic sand and salt spreaders offer quick and efficient distribution, with a front-mounted design that allows loading directly from the ground, similar to a standard bucket. Powered by a hydraulic motor, they feature a mixer axle to break up frozen sand and prevent clogging. The spring-loaded plates in the feeding roll ensure smooth operation by preventing stones from causing blockages or damage.

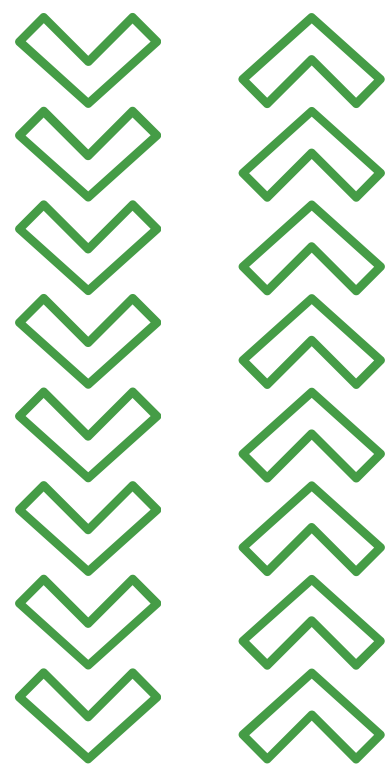
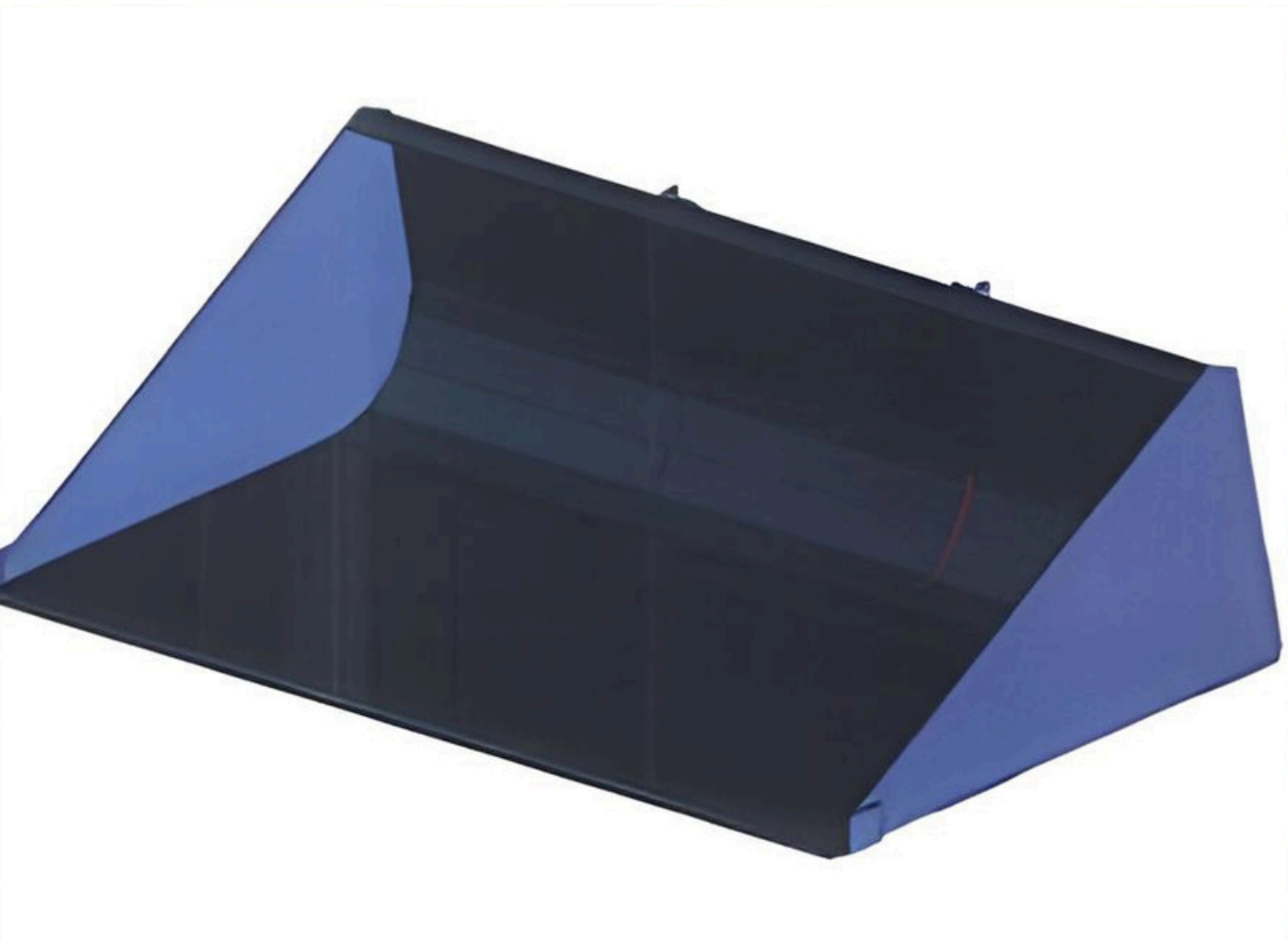
These spreaders can also be filled by loading material directly, just like a regular bucket. Built with a durable design, they are ideal for professional use.

## Technical Information

Model	900	900	1500
Spreading Width	900 mm	900 mm	1500 mm
Loading	Self Loading	Top Loading	Self Loading
Volume	200 l	160 l	500 l
Weight	120 kg	130 kg	270 kg
Operation	Hydraulic	Hydraulic	Hydraulic
Product No.	A2947	A2848	A411401

## Compatible Models

Model	A2947 Compatibility	A2848 Compatibility	A411401 Compatibility
220	✓ Compatible	✓ Compatible	✗ Not Compatible
225	✓ Compatible	✓ Compatible	✗ Not Compatible
225 LPG	✓ Compatible	✓ Compatible	✗ Not Compatible
313S	✓ Compatible	✓ Compatible	✗ Not Compatible
320S	✓ Compatible	✓ Compatible	✗ Not Compatible
420	✓ Compatible	✓ Compatible	✗ Not Compatible
520	✓ Compatible	✓ Compatible	+ Adaptable
525 LPG	✓ Compatible	✓ Compatible	+ Adaptable
528	✓ Compatible	✓ Compatible	✓ Compatible
530	✓ Compatible	✓ Compatible	✓ Compatible
630	✓ Compatible	✓ Compatible	✓ Compatible
635	✓ Compatible	✓ Compatible	✓ Compatible
640	✓ Compatible	✓ Compatible	✓ Compatible
745	✓ Compatible	✓ Compatible	✓ Compatible
750	✓ Compatible	✓ Compatible	✓ Compatible
755i	✓ Compatible	✓ Compatible	✓ Compatible
760i	✓ Compatible	✓ Compatible	✓ Compatible
e5	✓ Compatible	✓ Compatible	+ Adaptable
R20	✓ Compatible	✓ Compatible	✓ Compatible
R28	✓ Compatible	✓ Compatible	✓ Compatible
R35	✓ Compatible	✓ Compatible	✓ Compatible



# AVANT<sup>®</sup> Levelling Bucket

## 500, R, 600 & 700 SERIES Technical Information

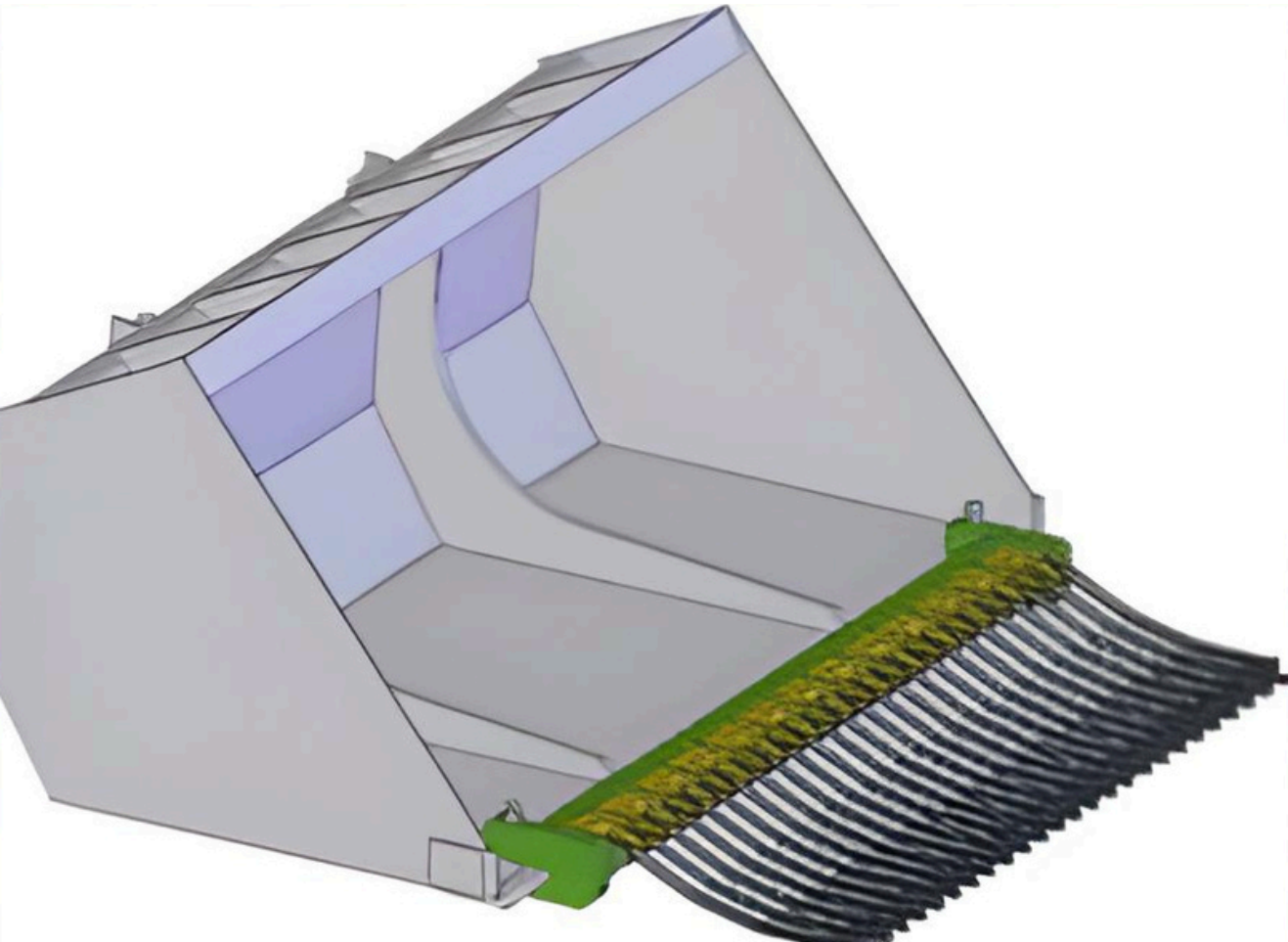
Width	Volume	Weight	Product No.
1450 mm	250 l	175 kg	A36717
1600 mm	280 l	190 kg	A36706

Our leveling buckets are designed for durability and precision. Featuring a sharp back edge, they allow for effortless leveling when driving in reverse. The extended bottom ensures optimal visibility of the bucket's tip, making operation more efficient.

The latest models are stronger, larger, and have a smooth interior for easy filling and emptying. With increased width and capacity, these heavy-duty buckets provide enhanced performance for demanding tasks.

# Compatible Models

Model	Compatibility
220	✗ Not Compatible
225	✗ Not Compatible
225 LPG	✗ Not Compatible
313S	✗ Not Compatible
320S	✗ Not Compatible
420	✓ Compatible
520	✓ Compatible
525 LPG	✓ Compatible
528	✓ Compatible
630	✓ Compatible
635	✓ Compatible
640	✓ Compatible
745	✓ Compatible
750	✓ Compatible
755i	✓ Compatible
760i	✓ Compatible
e5	✓ Compatible
R20	✓ Compatible
R28	✓ Compatible
R35	✓ Compatible



# Horse Manure Collector

## Technical Information

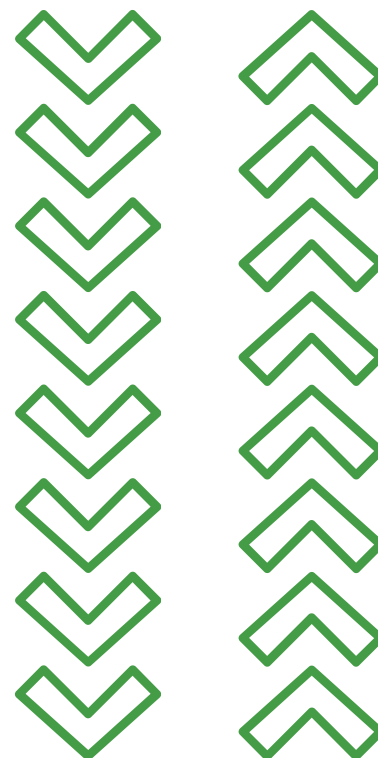
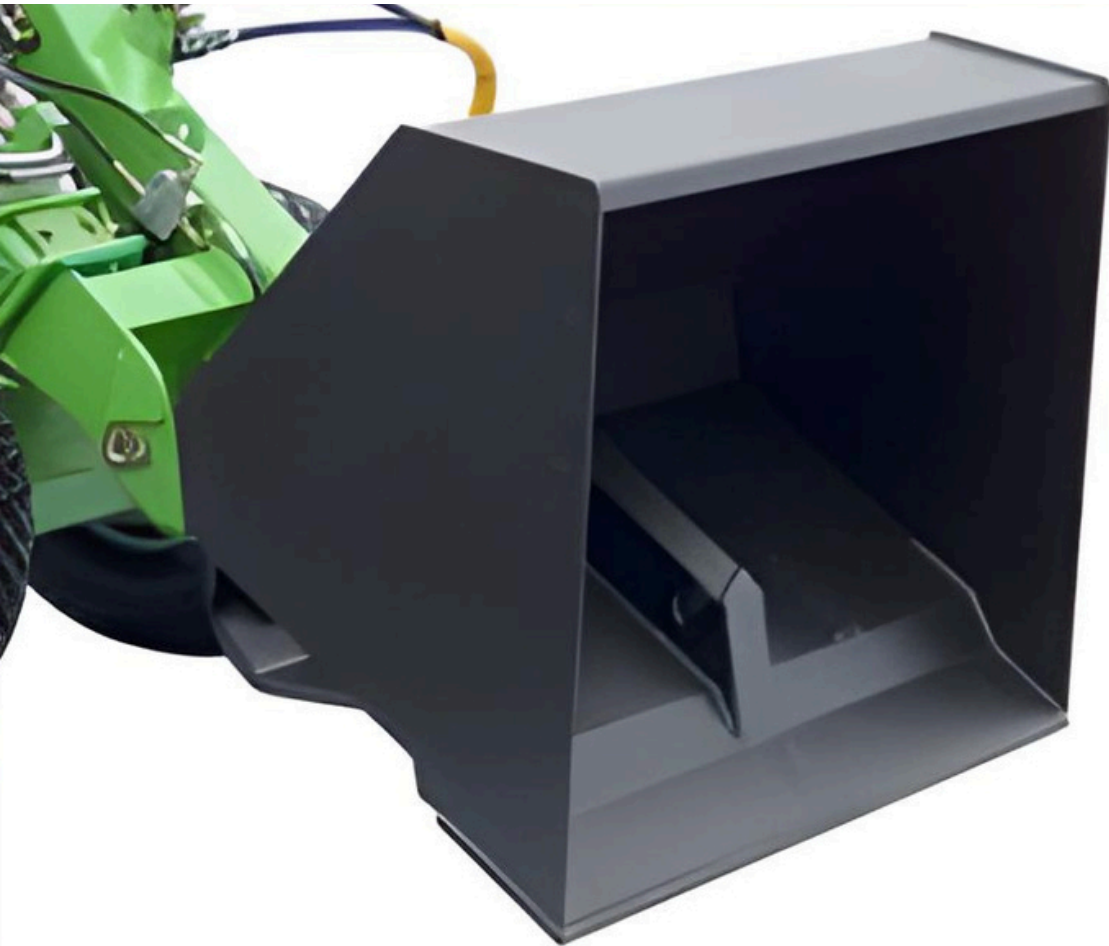
<u>Width</u>	<u>Weight</u>	<u>Product No.</u>
950 mm	29 kg	A36292

The horse manure collector offers a simple and cost-effective solution for efficiently gathering manure. It functions well on various surfaces, including sawdust and horse arenas.

Designed for convenience, it easily attaches to any Avant bucket, making it a practical and economical choice for stable maintenance.

## Compatible Models

Model	Compatibility
220	✓ Compatible
225	✓ Compatible
225 LPG	✓ Compatible
313S	✓ Compatible
320S	✓ Compatible
420	✓ Compatible
520	✓ Compatible
525 LPG	✓ Compatible
528	✓ Compatible
630	✓ Compatible
635	✓ Compatible
640	✓ Compatible
745	✓ Compatible
750	✓ Compatible
755i	✓ Compatible
760i	✓ Compatible
e5	✓ Compatible
R20	✓ Compatible
R28	✓ Compatible
R35	✓ Compatible



# AVANT® High Tip Bucket

## Technical Information

The high tip bucket is ideal for tasks requiring extended reach and greater tipping height. Featuring a hydraulic cylinder, it pushes and tips over the front edge, significantly increasing tipping height compared to standard buckets.

Designed for handling loose and lightweight materials, it offers greater capacity than a general bucket.

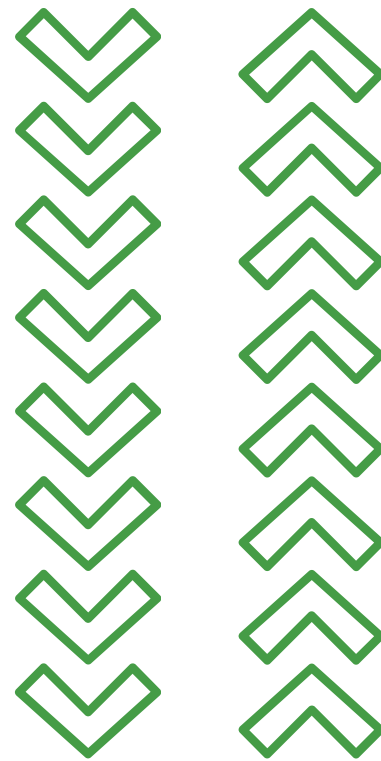
Maximum Tipping Height with Telescopic Boom:

- 300 series: 2710 mm
- 500 & 600 series: 3150 mm
- 700 series: 3500 mm

Width	Edge	Volume	Weight	Product No.
900 mm	Straight	190 l	62 kg	A36711
900 mm	Teeth	190 l	72 kg	A36716
1050 mm	Straight	150 l	50 kg	A36702*
1050 mm	Straight	240 l	73 kg	A36710
1050 mm	Teeth	240 l	83 kg	A36780
1150 mm	Straight	260 l	76 kg	A36709
1150 mm	Teeth	260 l	91 kg	A36779
1300 mm	Straight	300 l	86 kg	A36698
1300 mm	Teeth	300 l	98 kg	A36778
1350 mm	Straight	310 l	90 kg	A36996
1350 mm	Teeth	310 l	102 kg	A36997

## Compatible Models

Model	Compatibility
220	✓ Compatible
225	✓ Compatible
225 LPG	✓ Compatible
313S	✓ Compatible
320S	✓ Compatible
420	✓ Compatible
520	✓ Compatible
525 LPG	✓ Compatible
528	✓ Compatible
630	✓ Compatible
635	✓ Compatible
640	✓ Compatible
745	✓ Compatible
750	✓ Compatible
755i	✓ Compatible
760i	✓ Compatible
e5	✓ Compatible
R20	✓ Compatible
R28	✓ Compatible
R35	✓ Compatible



## AVANT® Grapple Bucket

The AVANT Grapple Bucket combines the functionality of a standard bucket with a powerful grapple, making it ideal for farm work, construction sites, and home use.

Designed for versatility, it efficiently transports and loads materials such as branches, wood chips, compost, straw, manure, and construction debris. When not in use, the grapple can be positioned upright, allowing the bucket to function as a standard scoop.

For heavier-duty applications, larger XL models with dual cylinders are available, specifically designed for the 700 and 800 series loaders.

### Standard Grapple Bucket Technical Information

Width	Weight	Product No.
900 mm	130 kg	A36304
1050 mm	146 kg	A36316
1300 mm	168 kg	A36323

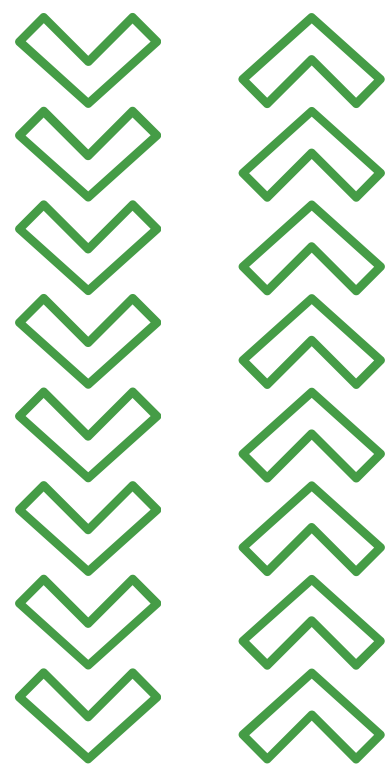
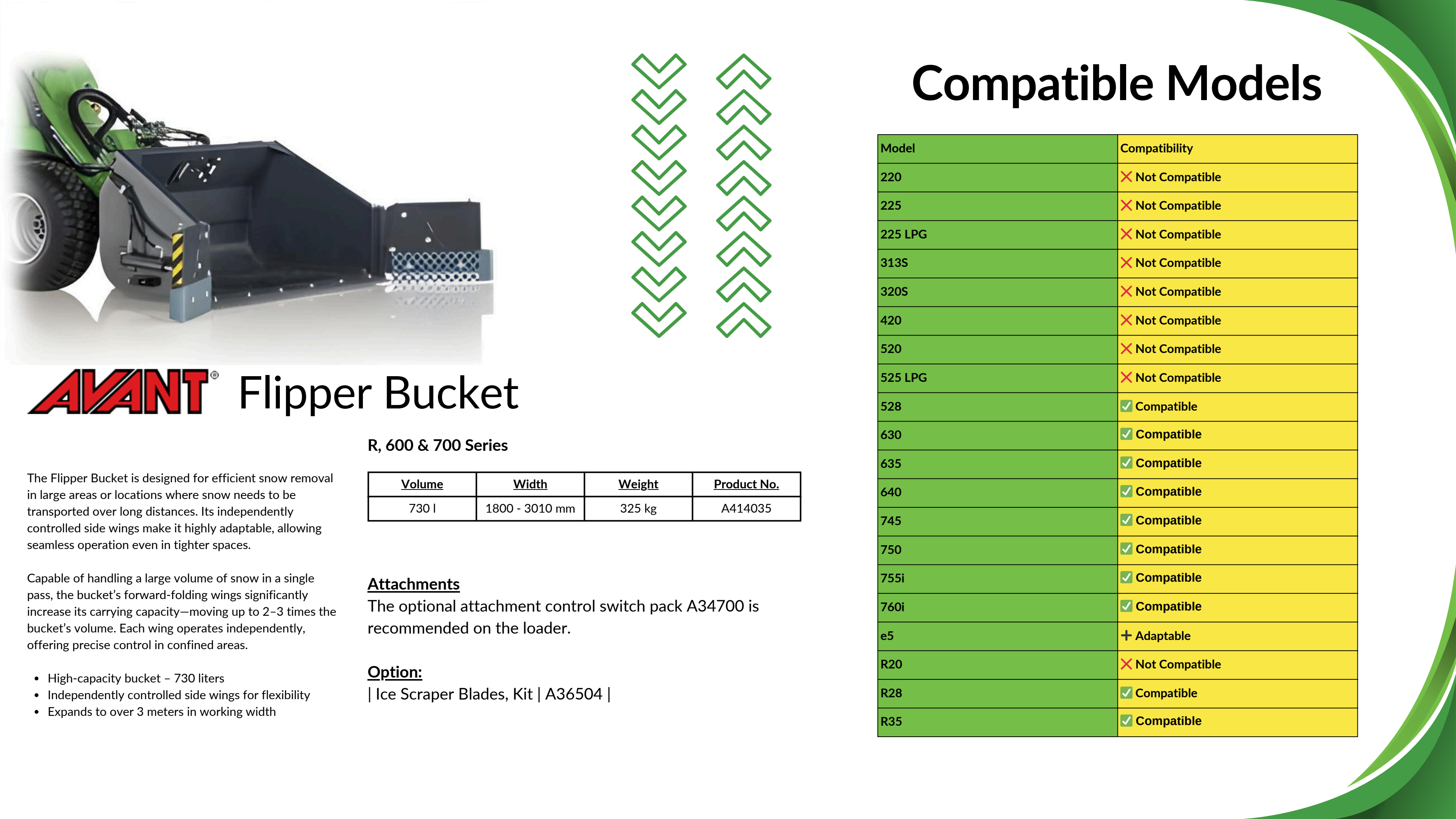
### XL Grapple Bucket for 700 & 800 Series

Width	Weight	Product No.
1300 mm	270 kg	A441963
1450 mm	288 kg	A441946
1600 mm	305 kg	A439086

**Option**  
Side plates, kit for XL grapple buckets: A439112

## Compatible Models

Model	Compatibility
220	✗ Not Compatible
225	✗ Not Compatible
225 LPG	✗ Not Compatible
313S	✗ Not Compatible
320S	✗ Not Compatible
420	✗ Not Compatible
520	✗ Not Compatible
525 LPG	✗ Not Compatible
528	+ Compatible
530	+ Compatible
630	✓ Compatible
635	✓ Compatible
640	✓ Compatible
745	✓ Compatible
750	✓ Compatible
755i	✓ Compatible
760i	✓ Compatible
e5	✗ Not Compatible
R20	✗ Not Compatible
R28	+ Compatible
R35	✓ Compatible



# AVANT® Flipper Bucket

## R, 600 & 700 Series

Volume	Width	Weight	Product No.
730 l	1800 - 3010 mm	325 kg	A414035

The Flipper Bucket is designed for efficient snow removal in large areas or locations where snow needs to be transported over long distances. Its independently controlled side wings make it highly adaptable, allowing seamless operation even in tighter spaces.

Capable of handling a large volume of snow in a single pass, the bucket's forward-folding wings significantly increase its carrying capacity—moving up to 2–3 times the bucket's volume. Each wing operates independently, offering precise control in confined areas.

### Attachments

The optional attachment control switch pack A34700 is recommended on the loader.

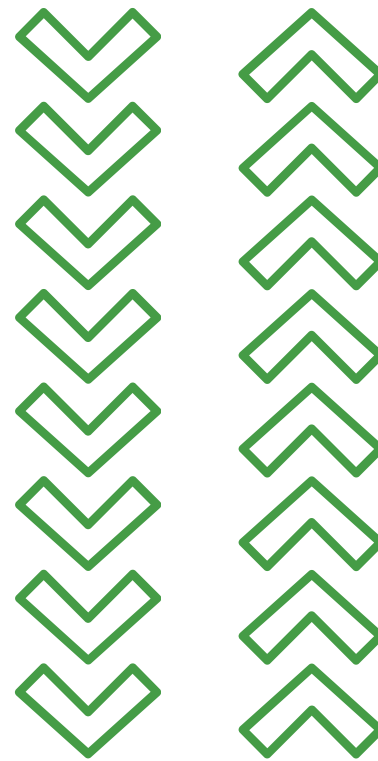
### Option:

| Ice Scraper Blades, Kit | A36504 |

- High-capacity bucket – 730 liters
- Independently controlled side wings for flexibility
- Expands to over 3 meters in working width

# Compatible Models

Model	Compatibility
220	✗ Not Compatible
225	✗ Not Compatible
225 LPG	✗ Not Compatible
313S	✗ Not Compatible
320S	✗ Not Compatible
420	✗ Not Compatible
520	✗ Not Compatible
525 LPG	✗ Not Compatible
528	✓ Compatible
630	✓ Compatible
635	✓ Compatible
640	✓ Compatible
745	✓ Compatible
750	✓ Compatible
755i	✓ Compatible
760i	✓ Compatible
e5	+ Adaptable
R20	✗ Not Compatible
R28	✓ Compatible
R35	✓ Compatible



## AVANT® 4 in 1 Buckets

A versatile multi-purpose bucket that functions as a standard bucket, dozer blade, leveler, and grab. Equipped with two hydraulic cylinders at the back, the front section opens for efficient dozing, leveling, and handling materials like stones and tree stumps.

The opening bottom allows for high-level emptying without tilting the bucket forward. Available with a straight edge or teeth for added versatility.

- Ideal for landscaping and ground maintenance
- Adaptable for multiple tasks across various job sites

### Technical Information

Specification	1150 mm Model	1300 mm Model
Width	1150 mm	1300 mm
Volume	235 l	270 l
Weight	207 kg	221 kg
Product No.	A462542	A457723

## Compatible Models

Model	Compatibility
320S+	✓ Compatible
420	✓ Compatible
423	✓ Compatible
520	✓ Compatible
523	✓ Compatible
525 LPG	✓ Compatible
528	✓ Compatible
530	✓ Compatible
630	✓ Compatible
635	✓ Compatible
640	✓ Compatible
635i	✓ Compatible
640i	✓ Compatible
645i	✓ Compatible

Model	Compatibility
650i	✓ Compatible
735	✓ Compatible
745	✓ Compatible
750	✓ Compatible
735i	✓ Compatible
755i	✓ Compatible
760i	✓ Compatible
860i	✓ Compatible
R20	✓ Compatible
R28	✓ Compatible
R35	✓ Compatible
e5	✓ Compatible
e6	✓ Compatible
e513	✓ Compatible
e527	✓ Compatible



# AVANT® General Bucket Attachment

## Technical Information

<u>Width</u>	<u>Weight</u>	<u>Product No.</u>
1050 mm	205 kg	A37465
1300 mm	225 kg	A37535

The demolition grapple bucket, equipped with two hydraulic grapples, is a robust and adaptable attachment designed for efficiently handling construction and demolition waste. The latest model features a reinforced bucket and grapples, along with a more durable cutting edge for enhanced performance. Additionally, the hydraulic cylinders and hoses are well-protected from falling debris, ensuring longevity and reliability. For ease of maintenance, the grapples, pins, cylinders, and hoses can be quickly replaced when needed.

A highly versatile bucket with dual hydraulic grapples, ideal for demolition and construction applications.

## Compatible Models

Model	Compatibility
220	✗ Incompatible
225	✗ Incompatible
225 LPG	✗ Incompatible
313S	⦿ Compatible
320S	⦿ Compatible
420	⦿ Compatible
423	⦿ Compatible
520	✓ Very Compatible
523	✓ Very Compatible
528	✓ Very Compatible
530	✓ Very Compatible
630	✓ Very Compatible
635	✓ Very Compatible
640	✓ Very Compatible
745	✓ Very Compatible
750	✓ Very Compatible
755i	✓ Very Compatible
760i	✓ Very Compatible
e5	✓ Very Compatible
e6	✓ Very Compatible
R28	✓ Very Compatible
R35	✓ Very Compatible